



GNL3L Polyclonal Antibody

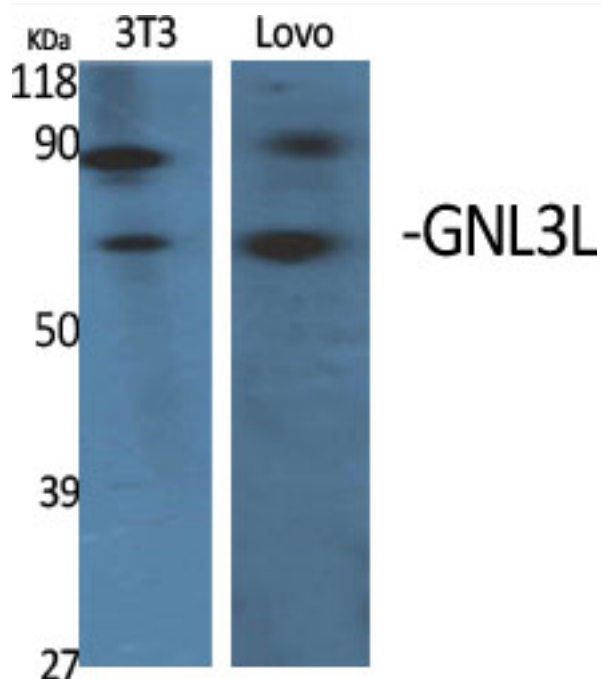
Catalog No	YP-Ab-00414
Isotype	IgG
Reactivity	Human;Rat;Mouse;;Cat
Applications	WB;IHC;IF;ELISA
Gene Name	GNL3L
Protein Name	Guanine nucleotide-binding protein-like 3-like protein
Immunogen	The antiserum was produced against synthesized peptide derived from human GNL3L. AA range:71-120
Specificity	GNL3L Polyclonal Antibody detects endogenous levels of GNL3L protein.
Formulation	Liquid in PBS containing 50% glycerol, 0.5% BSA and 0.02% sodium azide.
Source	Polyclonal, Rabbit,IgG
Purification	The antibody was affinity-purified from rabbit antiserum by affinity-chromatography using epitope-specific immunogen.
Dilution	WB: 1/500 - 1/2000. IHC: 1/100 - 1/300. ELISA: 1/5000.. IF 1:50-200
Concentration	1 mg/ml
Purity	≥90%
Storage Stability	-20°C/1 year
Synonyms	GNL3L; Guanine nucleotide-binding protein-like 3-like protein
Observed Band	66kD
Cell Pathway	Nucleus, nucleolus .
Tissue Specificity	Lung,Skin,
Function	domain:In contrast to other GTP-binding proteins, this family is characterized by a circular permutation of the GTPase motifs described by a G4-G1-G3 pattern.,function:Required for normal processing of ribosomal pre-rRNA. Required for cell proliferation. Binds GTP.,similarity:Belongs to the MMR1/HSR1 GTP-binding protein family.,
Background	The protein encoded by this gene appears to be a nucleolar GTPase that is essential for ribosomal pre-rRNA processing and cell proliferation. Two transcript variants encoding the same protein have been found for this gene. [provided by RefSeq, May 2010],
matters needing attention	Avoid repeated freezing and thawing!



Usage suggestions

This product can be used in immunological reaction related experiments. For more information, please consult technical personnel.

Products Images



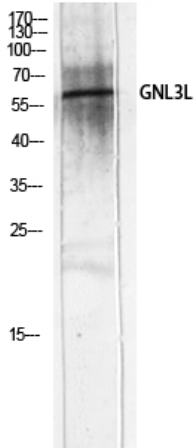
Western Blot analysis of various cells using GNL3L Polyclonal Antibody diluted at 1:2000 cells nucleus extracted by Minute TM Cytoplasmic and Nuclear Fractionation kit (SC-003, Inventbiotech, MN, USA).



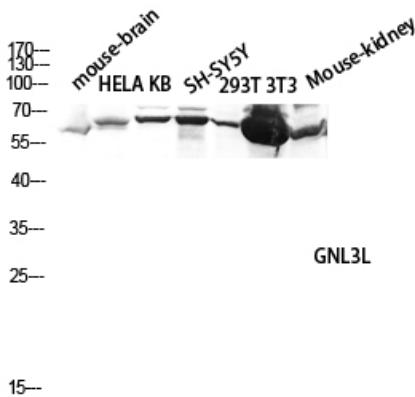
Western Blot analysis of HT29 cells using GNL3L Polyclonal Antibody diluted at 1:2000 cells nucleus extracted by Minute TM Cytoplasmic and Nuclear Fractionation kit (SC-003, Inventbiotech, MN, USA).



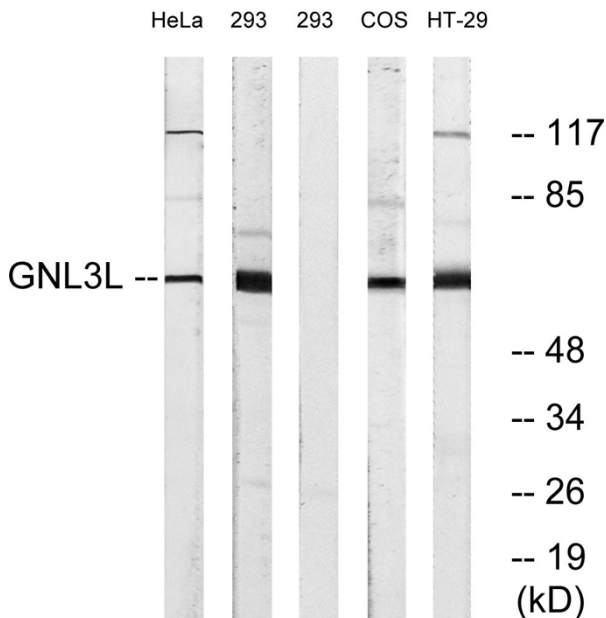
customer's (cat sample)



Western Blot analysis of customer's (cat sample) using GNL3L Polyclonal Antibody diluted at 1:2000 cells nucleus extracted by Minute TM Cytoplasmic and Nuclear Fractionation kit (SC-003, Inventbiotech, MN, USA).



Western blot analysis of mouse-brain HELA KB SH-SY5Y 293T 3T3 Mouse-kidney lysis using GNL3L antibody. Antibody was diluted at 1:2000 cells nucleus extracted by Minute TM Cytoplasmic and Nuclear Fractionation kit (SC-003, Inventbiotech, MN, USA).



Western blot analysis of lysates from 293, HeLa, and HT-29 cells, using GNL3L Antibody. The lane on the right is blocked with the synthesized peptide.